
	SMD Rework Solution We are specialist for SMD Rework such as 0402 chip, CSP,BGA and QFP etc.	▶ Japanese ▶ Contact Us ▶ Site Map	 M.S.Engineering Co.,Ltd.
		<input type="text"/>	<input type="button" value="Search"/>
Products	Support	Company	distributor
MS9100SAN <small>NEW</small>	Home(Products) > MS9100SAN Overview		
<ul style="list-style-type: none"> Overview Operation The powerful heating system Positioning system Accessories Optional Parts Specifications Catalog 	MS9100SAN Rework Station for large Board		
 PDF for Printing The Contents	Overview		
			
Rework Station:	MS9100SAN can be rework maximum 520 x 610mm board, it will be possible also at the board whose thickness is even 5mm in 24 layers.		
<ul style="list-style-type: none"> MS9000SAN (Ver-II) <small>NEW</small> MS9000GTIR IR Rework MS7000IR IR Rework MS9100 for L-Board <small>NEW</small> MS8000N for Economy use MS7000 for Chip Parts MS6000 for Chip Parts MS5000 Rework_Cleaner ND5100 for Through Hole ND5300 for Through Hole ND3000WP Through Hole 	For large size board(max 520 x 610 mm)		
Accessories:	Board thickness 5.0 mm or more		
<ul style="list-style-type: none"> Reflow Nozzles SND Printing Jig PLCP Printing Jig(Fine pitch) MSC01K Cleaning Kit RBL Re-Balling Jig PLCR Re-balling for CSP ST50K Sensor Kit OP-TB01 Calibration Jig MSC-01WARP Board Jig 	Auto-Thermal Profile Control System		
Related Systems:	built-in 2CH thermo profile checker		
<ul style="list-style-type: none"> MSX500 X-Ray System MSX1000 X-Ray System MSX1200 X-Ray System MSX2500 Tomography <small>NEW</small> MSX2500L Tomography <small>NEW</small> Manual Solder Printer MS1000U BGA Scope PR1 Solder Ball Checker <small>NEW</small> NV2200 Solder Cleaner MSC300U Profile Checker RTTS555 Reflow Checker 	8KVA wide bottom heater system		
>>Next Page			
M.S.Engineering Co.,Ltd. 2-17-11, Shinyokohama Kohoku-ku Yokohama-shi, Kanagawa-ken 222-0033 Japan. Phone: +81-45-472-6441 / Fax: +81-45-472-6432 Copyright(C)2007 M.S.Engineering Co.,Ltd. All rights Reserved.			



SMD Rework Solution
We are specialist for SMD Rework such as 0402 chip, CSP, BGA and QFP etc.

▶ Japanese ▶ Contact Us ▶ Site Map | **M.S.Engineering Co.,Ltd.**

Products
Support
Company
distributor

MS9100SAN NEW

- Overview
- Operation
- The powerful heating system
- Positioning system
- Accessories
- Optional Parts
- Specifications
- Catalog
- PDF for Printing The Contents

Rework Station:

- MS9000SAN (Ver-II) NEW
- MS9000GTIR IR Rework
- MS7000IR IR Rework
- MS9100SAN for L-Board NEW
- MS8000N for Economy use
- MS7000 for Chip Parts
- MS6000 for Chip Parts
- MS5000 Rework_Cleaner
- ND5100 for Through Hole
- ND5300 for Through Hole
- ND3000WP Through Hole

Accessories:

- Reflow Nozzles
- SND Printing Jig
- PLCP Printing Jig(Fine pitch)
- MSC01K Cleaning Kit
- RBL Re-Balling Jig
- PLCR Re-balling for CSP
- ST50K Sensor Kit
- OP-TB01 Calibration Jig
- MSC-01WARP Board Jig

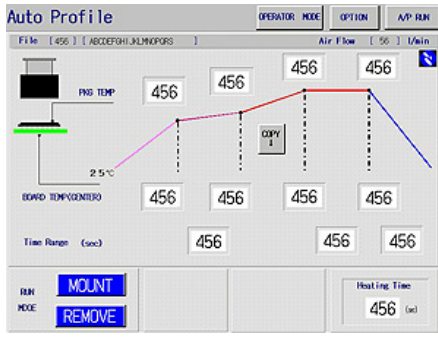
Related Systems:

- MSX500 X-Ray System
- MSX1000 X-Ray System
- MSX1200 X-Ray System
- MSX2500 Tomography NEW
- MSX2500L Tomography NEW
- Manual Solder Printer
- MS1000U BGA Scope
- PR1 Solder Ball Checker NEW
- NV2200 Solder Cleaner
- MSC300U Profile Checker
- RTTS555 Reflow Checker

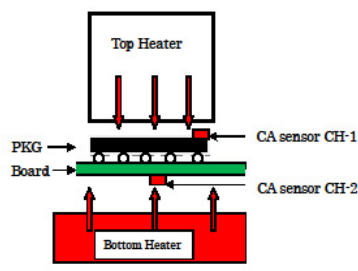
Home(Products) > MS9100SAN Operation

MS9100SAN Rework Station for large Board

Automatic Thermal Profile System



ITTS (Intelligent Thermal-Trace System) make the optimal temperature profile automatically, if the temperature data of the profile which you expect is inputted. The ten key screen for data input is appear, if the window to input is touched. MS9100SAN has the important control data beforehand. The required input data are only temperature for soldering.



ITTS automatic operation is controlled by the sensor at "CA for CH-1, and CA for CH-2". The CH-1 is the temperature of surface of the component, and the CH-2 is the temperature of under-side of the board. In generally, the temperature of CH-2 makes it the same as CH-1; then the temperature of solder will be the approximately same.

More details can be check the technical report "[Rework Solution Technical Report](#)" and "[The Best Heating System for Reworking](#)".

The CA sensor for CH-1 and CH-2 must be sensing correctly of surface temperature each. It is very important. The suitable CA sensor kit for the subject is model [ST-50K](#).

Operation

MS9100SAN has the same control system as MS9000SAN-(II) except of heater power and size of XY table. Therefore, the machine has 2 kinds of the thermal-control systems. They are a auto thermal temperature profile control system, and a 6 zones of manual setting thermal control system. The system operation is very easy, because, it is in touch panel.

[>>Next Page](#)



SMD Rework Solution
We are specialist for SMD Rework such as
0402 chip, CSP, BGA and QFP etc.

[▶ Japanese](#) | [▶ Contact Us](#) | [▶ Site Map](#) | **M.S.Engineering Co.,Ltd.**

Products
Support
Company
distributor

MS9100SAN:

- Overview
- Operation
- The powerful heating system
- Positioning system
- Accessories
- Optional Parts
- Specifications
- Catalog
- PDF for Printing
The Contents

Rework Station:

- MS9000SAN (Ver-II) NEW
- MS9000GTIR IR Rework
- MS7000IR IR Rework
- MS9100SAN for L-Board NEW
- MS8000N for Economy use
- MS7000 for Chip Parts
- MS6000 for Chip Parts
- MS5000 Rework_Cleaner
- ND5100 for Through Hole
- ND5300 for Through Hole
- ND3000WP Through Hole

Accessories:

- Reflow Nozzles
- SND Printing Jig
- PLCP Printing Jig(Fine pitch)
- MSC01K Cleaning Kit
- RBL Re-Balling Jig
- PLCR Re-balling for CSP
- ST50K Sensor Kit
- OP-TB01 Calibration Jig
- MSC-01WARP Board Jig

Related Systems:

- MSX500 X-Ray System
- MSX1000 X-Ray System
- MSX1200 X-Ray System
- MSX2500 Tomography NEW
- MSX2500L Tomography NEW
- Manual Solder Printer
- MS1000U BGA Scope
- PR1 Solder Ball Checker NEW
- NV2200 Solder Cleaner
- MSC300U Profile Checker
- RTTS555 Reflow Checker

Home(Products) > MS9100SAN The powerful heating system

MS9100SAN Rework Station for large Board

The powerful heating system



BOTTOM HEATER AREA SELECT

POWER		<input type="button" value="↑"/>
HIGH	<input type="button" value="REAR"/>	
MIDDLE	<input type="button" value="FRONT"/>	
LOW		<input type="button" value="↓"/>

The Controller for Bottom heater, It can be select in only a required zone. It is for safety and efficiently heating.

The Y axis is by the table adjuster and the X axis is by top heater head moving. The reworking is possible on the board at all, by combination moving of X and Y.

The bottom heater is IR system and the top heater is by hot air system. The temperature profile for lead free can be created by the combination of those high response heater system. And wide bottom heater can be best condition heating to the board with minimum warping by heating. Even the board of 5mm thickness and 24 layers can be reworking with good condition.



Board Test sample

[>>Next Page](#)

M.S.Engineering Co.,Ltd.
2-17-11, Shinyokohama Kohoku-ku Yokohama-shi, Kanagawa-ken 222-0033 Japan. Phone: +81-45-472-6441 / Fax: +81-45-472-6432
Copyright(C)2007 M.S.Engineering Co.,Ltd. All rights Reserved.



SMD Rework Solution
 We are specialist for SMD Rework such as
 0402 chip, CSP, BGA and QFP etc.

▶ Japanese ▶ Contact Us ▶ Site Map | **M.S. Engineering Co., Ltd.**

Products

Support

Company

distributor

MS9100SAN:

- Overview
- Operation
- The powerful heating system
- Positioning system
- Accessories
- Optional Parts
- Specifications
- Catalog

PDF for Printing
 The Contents

Rework Station:

- MS9000SAN (Ver-II) NEW
- MS9000GTIR IR Rework
- MS7000IR IR Rework
- MS9100SAN for L- Board NEW
- MS8000N for Economy use
- MS7000 for Chip Parts
- MS6000 for Chip Parts
- MS5000 Rework_Cleaner
- ND5100 for Through Hole
- ND5300 for Through Hole
- ND3000WP Through Hole

Accessories:

- Reflow Nozzles
- SND Printing Jig
- PLCP Printing Jig(Fine pitch)
- MSC01K Cleaning Kit
- RBL Re-Balling Jig
- PLCR Re-balling for CSP
- ST50K Sensor Kit
- OP-TB01 Calibration Jig
- MSC-01WARP Board Jig

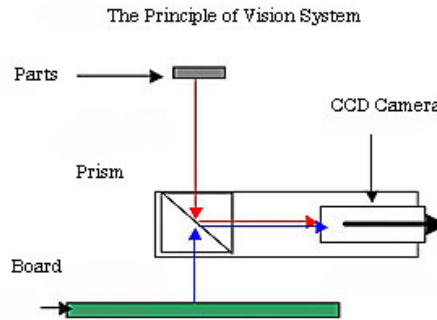
Related Systems:

- MSX500 X-Ray System
- MSX1000 X-Ray System
- MSX1200 X-Ray System
- MSX2500 Tomography NEW
- MSX2500L Tomography NEW
- Manual Solder Printer
- MS1000U BGA Scope
- PR1 Solder Ball Checker NEW
- NV2200 Solder Cleaner
- MSC300U Profile Checker
- RTTS555 Reflow Checker

[Home\(Products\)](#) > MS9100SAN Positioning system

MS9100SAN Rework Station for large Board

Positioning system



The positioning of the SMD as BGA is by optical high precision system. It is the system which image monitor on the screen, and the image is compounds of the parts and the board by the prism. The splitter system is used when the large size parts as 27mm or more. It is positioning by the expands diagonal image. The direct image system used when the parts is small size less than 27mm,

Positioning Screen by the Direct Image:

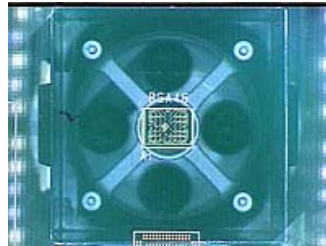


Fig 1

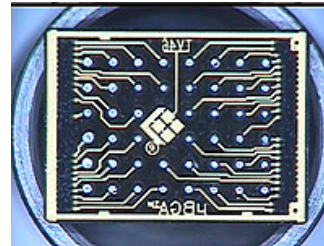


Fig 2

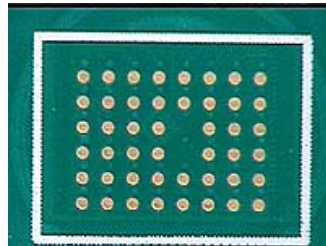


Fig 3

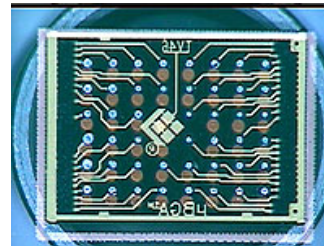


Fig 4

Fig-1:5x8CSP (5.0x8.0mm size)
 Fig-2:Expansion of the CSP
 Fig-3:The board image
 Fig-4:CSP and Board image was overlaps on the screen.

Positioning Screen by the splitter Image:

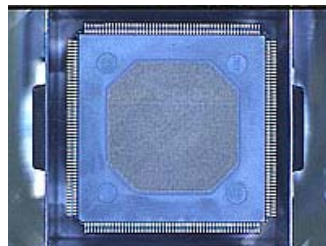


Fig 5

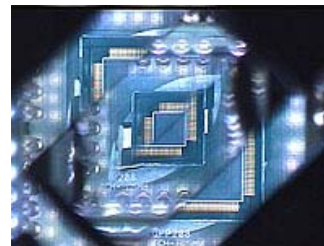


Fig 6

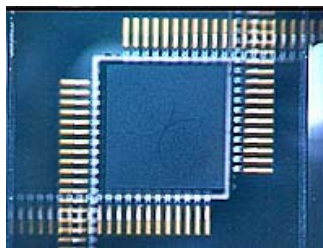


Fig 7


The splitter function is effective to the image of 27.0x27.0mm or more large size package.

Fig-5:35.0x35.0mm QFP

Fig-6:The image was cut off of the diagonal

Fig-7:The diagonal image is expanded on the screen. Positioning can be correctly by the expanded image.

[>>Next Page](#)




SMD Rework Solution
We are specialist for SMD Rework such as
0402 chip, CSP, BGA and QFP etc.

[▶ Japanese](#) | [▶ Contact Us](#) | [▶ Site Map](#) | **M.S.Engineering Co.,Ltd.**

Products
Support
Company
distributor

MS9100SAN:

- Overview
- Operation
- The powerful heating system
- Positioning system
- Accessories
- Optional Parts**
- Specifications
- Catalog

 PDF for Printing
The Contents

Rework Station:

- MS9000SAN (Ver-II) NEW
- MS9000GTIR IR Rework
- MS7000IR IR Rework
- MS9100 for L- Board NEW
- MS8000N for Economy use
- MS7000 for Chip Parts
- MS6000 for Chip Parts
- MS5000 Rework_Cleaner
- ND5100 for Through Hole
- ND5300 for Through Hole
- ND3000WP Through Hole

Accessories:

- Reflow Nozzles
- SND Printing Jig
- PLCP Printing Jig(Fine pitch)
- MSC01K Cleaning Kit
- RBL Re-Balling Jig
- PLCR Re-balling for CSP
- ST50K Sensor Kit
- OP-TB01 Calibration Jig
- MSC-01WARP Board Jig

Related Systems:

- MSX500 X-Ray System
- MSX1000 X-Ray System
- MSX1200 X-Ray System
- MSX2500 Tomography NEW
- MSX2500L Tomography NEW
- Manual Solder Printer
- MS1000U BGA Scope
- PR1 Solder Ball Checker NEW
- NV2200 Solder Cleaner
- MSC300U Profile Checker
- RTTS555 Reflow Checker

[Home\(Products\)](#) > MS9100AN Optional Parts

MS9100SAN Rework Station for large Board

Optional Parts

[Nozzle](#): It selects according to the size of the package which rework.
[Sensor Kit](#) : This is CA sensor for surface temperature of the package and also the board.
[Cleaning unit](#) : It is the cleaner for the board which after reworking.
[Solder Printing Jig](#) : The printing jig for the BGA.
[Test Board Kit](#) :It is for Vision system calibration.
[Inspection system](#) : X ray inspection system for after reworking.

[>>Next Page](#)

M.S.Engineering Co.,Ltd.
2-17-11, Shinyokohama Kohoku-ku Yokohama-shi, Kanagawa-ken 222-0033 Japan. Phone: +81-45-472-6441 / Fax: +81-45-472-6432
Copyright(C)2007 M.S.Engineering Co.,Ltd. All rights Reserved.